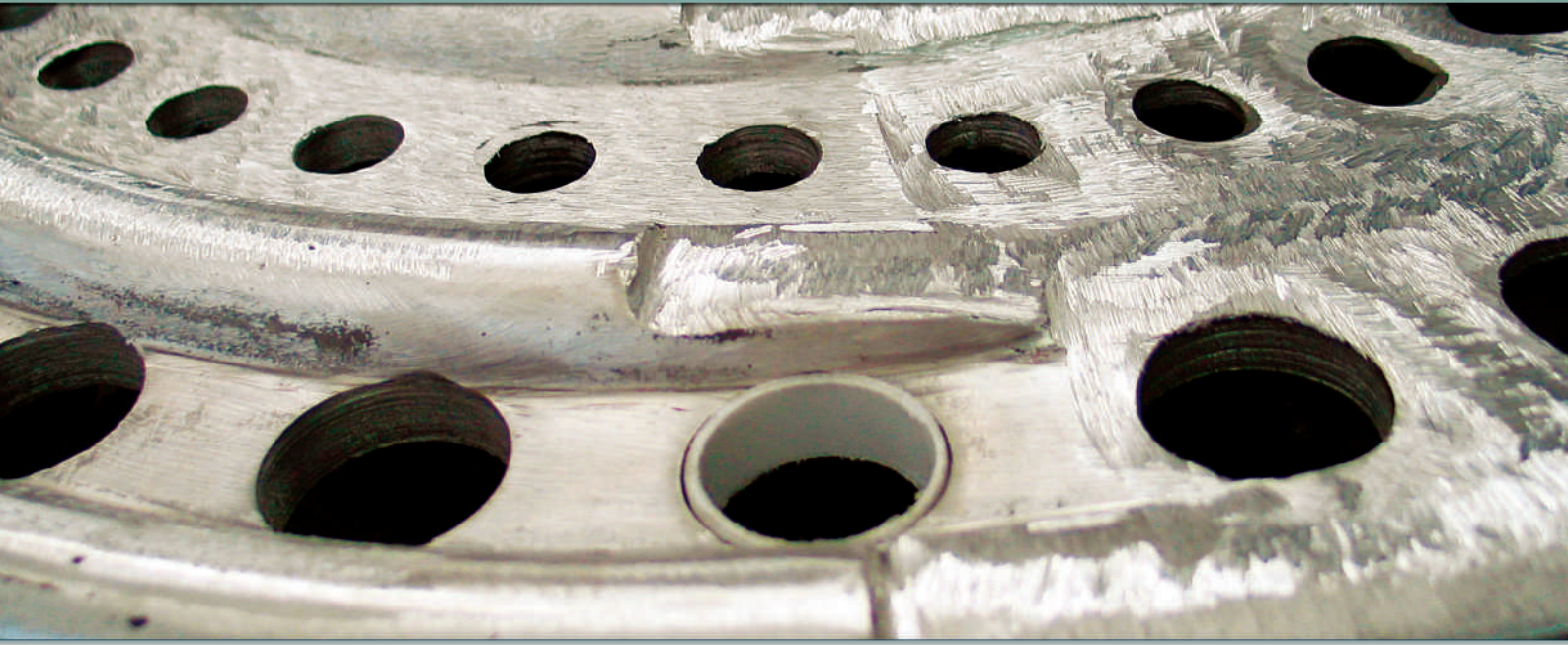
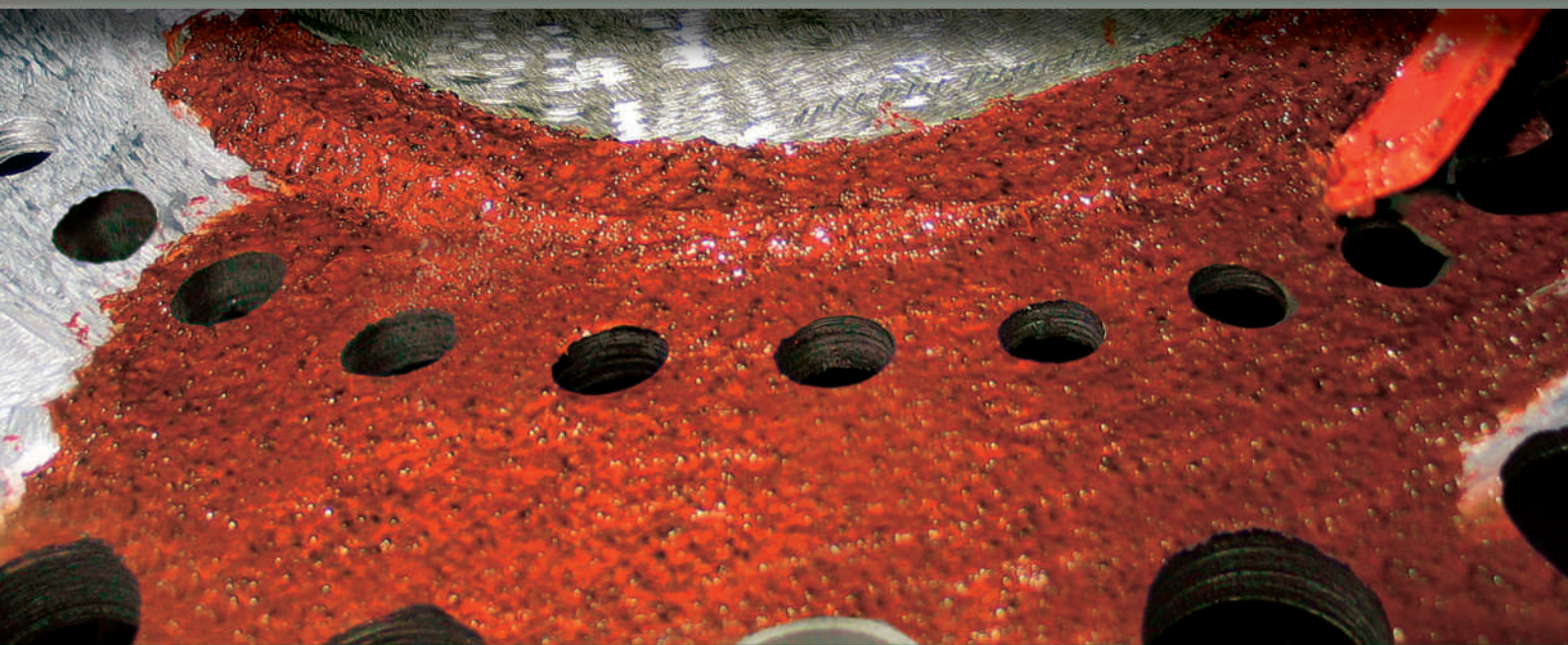


products for the most demanding clients



chester[®]
molecular



PAINTING OR FILLING

SURFACE PROTECTION AGAINST EROSION AND CORROSION



PAINTING OR FILLING

Ceramic F/FSL Metal

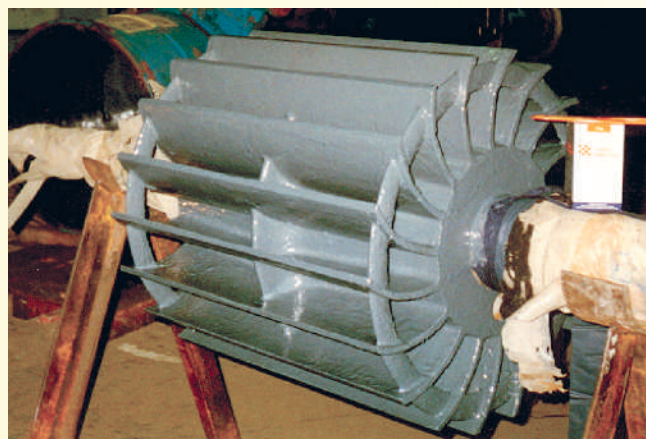
Liquid epoxy material with ceramic and siliceous-metallic fillers. Long hardening time version is also available – Ceramic FSL Metal.

Protection of:

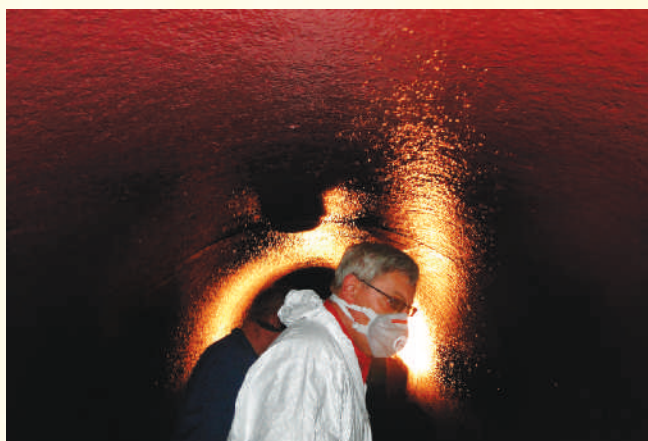
- fuel pump bases and impellers
- pipes and tanks
- heat exchangers
- valves and gate valves
- vacuum pumps
- fans
- elbows and tees
- Kort nozzles, thrusters
- shafts screws
- washers

They protect against corrosion, abrasion, erosion and cavitation by forming a smooth and tight coating
No shrinkage or stress of coating when hardening
They contain 100% of solids
Good for metallic and concrete surfaces
They come in two colours, so it is easy to check the correctness of application methods and to measure the used amounts.

Minimum application temperature 10°C
Working temperature dry and moist to 150°C/100°C
Colour: blue and gray
Maximum layer thickness: 0,3 mm
Recommended coating thickness: 0,6-1,2 mm



SURFACE PROTECTION AGAINST EROSION AND CORROSION



HYDRODYNAMIC APPLICATION

Coating D1

Liquid epoxy material containing quartz fillers and antirust pigments.
Protects against weather conditions and corrosion.
Recommended as base layer.

Protection of:

- tanks
- pipelines
- steel structures
- manholes
- frameworks
- masts

It may be applied with a brush

It forms a tight coating

No shrinkage or stress of coating when hardening

It contains 100% of solids

Good for metallic and concrete surfaces

Recommended complete covering system consists of precoat

Chester Coating D1 and outer layer Chester Coating D2

Minimum application temperature 15°C

Working temperature dry and moist to 100°C/60°C

Colour: gray

Maximum thickness of layer: 0,25 mm

Recommended coating thickness: 0,5-1,0 mm

Coating D2

Liquid epoxy material containing quartz or barrier fillers.
Protects against weather conditions and corrosion.
Recommended as precoat.

Protection of:

- tanks
- pipelines
- steel structures
- manholes
- frameworks
- masts

It may be applied with a brush

It forms a tight coating

No shrinkage or stress of coating when hardening

It contains 100% of solids

Good for metallic and concrete surfaces

Recommended complete covering system consists of precoat

Chester Coating D1 and outer layer Chester Coating D2

Minimum application temperature 15°C

Working temperature dry and moist to 100°C/60°C

Colour: gray

Maximum thickness of layer: 0,25 mm

Recommended coating thickness: 0,5-1,0 mm

SURFACE PROTECTION AGAINST EROSION AND CORROSION



PAINTING OR FILLING

Metal Ceramic FHT

Epoxy – novolac material containing ceramic and siliceous-metallic fillers.
Protects against corrosion, erosion and cavitation at elevated temperature.

Protection of:

- fuel pump base and impellers
- pipelines
- valves, gate valves
- tanks
- heat exchanger
- autoclaves
- evaporators and condensers
- scrubbers
- fans
- flues
- oil interceptor

Resistant to thermal shocks

It forms a smooth and tight coating. Contains 100% of solids
No shrinkage or stress of coating when hardening

Minimum application temperature 18°C
Working temperature dry and moist to 220°C/140°C
Colour: dark grey
Maximum thickness of layer: 0,4 mm
Recommended coating thickness: 0,8-1,6 mm

Surface Protector D / DSL

Liquid epoxy material containing ceramic fillers.
Long hardening time version is also available.

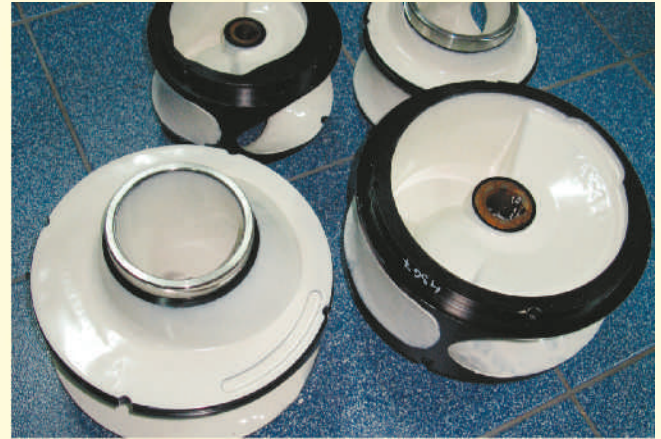
Protection of:

- flooring and floors
- tanks
- pipelines
- manholes
- damp-proof foundations
- sewage installations

No shrinkage or stress of coating in hardening
It contains 100% of solids
Protects against erosion and corrosion.
Good for metallic and concrete surface

Minimum application temperature 10°C
Working temperature dry and moist to 100°C/60°C
Colour: lightgrey blue, green, grey
Maximum thickness of layer: 0,3 mm
Recommended coating thickness: 0,6-0,9 mm

SURFACE PROTECTION AGAINST CHEMICAL CORROSION



PAINTING OR FILLING

Surface Protector A

Liquid epoxy bituminous material for protection against corrosion and chemicals' effect.

Protection of:

- tanks and sewers pipelines
- underground constructions bulkheads
- submersible pumps
- buoys
- marine constructions
- water equipments
- damp-proof foundations
- tanks and masts

Resistant to thermal shocks
On metallic and concrete surface

Minimum application temperature 10°C
Working temperature dry and moist to 80°C/60°C
Colour: black
Maximum thickness of layer: 0,3 mm
Recommended coating thickness: 0,6-0,9 mm

Surface Protector E

Liquid epoxy – novolac material containing effective barrier fillers. Extremely resistant to aggressive media also at elevated temperatures.

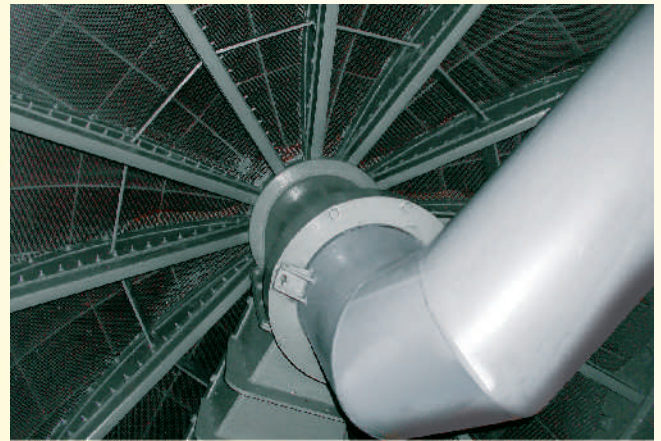
Protection of:

- chemicals' tanks
- pipelines
- pumps
- channel and exhaust fumes diffusers
- spillage containers
- washers and reactors
- drains, sewers and tanks
- chemical waste landfills

No shrinkage or stress of coating when hardening
On metallic and concrete surface
It contains 100% of solids
It forms an extremely smooth and tight coating

Minimum application temperature 10°C
Working temperature dry and moist to 180°C/90°C
Colour: cream and grey
Maximum thickness of layer: 0,3 mm
Recommended coating thickness: 0,6-1,2 mm

SURFACE PROTECTION AGAINST CHEMICAL CORROSION



HYDRODYNAMIC APPLICATION

Coating E1

Liquid epoxy - novolac material containing anticorrosive pigments and mineral fillers.
Protects against corrosion, diluted chemicals also at elevated temperatures. Recommended as precoat.

Protection of:

- tanks
- pipelines
- steel constructions
- flues
- reactors
- washers
- spillage containers

It forms a very tight coating.
It contains 100% of solids
No shrinkage or stress of coating when hardening
On metallic and concrete surface

Recommended complete covering system consists of precoat Chester Coating D1 and outer layer Chester Coating D2
Minimum application temperature 15°C
Working temperature dry and moist to 150°C/80°C
colour: Coating E1 iron red
Maximum thickness of layer: 0,25 mm
Recommended coating thickness: 0,5-1,0 mm

Coating E2

Liquid epoxy – novolac material containing barrier fillers.
Protects against corrosion, diluted chemicals also at elevated temperatures. Recommended as precoat.

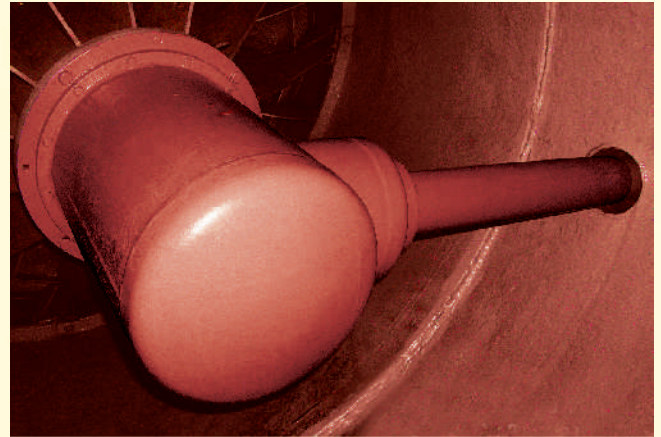
Protection of:

- tanks
- pipelines
- steel constructions
- flues
- reactors
- washers
- spillage containers

It forms a very tight coating.
It contains 100% of solids
No shrinkage or stress of coating when hardening
On metallic and concrete surface

Recommended complete covering system consists of precoat Chester Coating D1 and outer layer Chester Coating D2
Minimum application temperature 15°C
Working temperature dry and moist to 150°C/80°C
colour: Coating E2 grey
Maximum thickness of layer: 0,25 mm
Recommended coating thickness: 0,5-1,0 mm

SURFACE PROTECTION AGAINST CHEMICAL CORROSION



HYDRODYNAMIC APPLICATION

Coating EHT

Liquid epoxy – novolac material containing barrier fillers and anticorrosive pigments for application by method of airless spraying.

Protection of:

- tanks
- pipelines
- steel constructions
- tanks and sewers
- washers and reactors
- heat exchangers
- gate valves and valves

No shrinkage or stress of coating when hardening
It forms an extremely tight coating.
On metallic and concrete surface
Good chemical resistance also at elevated temperatures.
Resistant to thermal shocks.
It contains 100% of solids

Minimum application temperature 15 C
Working temperature dry and moist to 170 C/80 C
colour: iron red
Maximum thickness of layer: 0,25 mm
Recommended coating thickness: 0,5-1,0 mm



SURFACE PROTECTION AGAINST ABRASION



FILLING

Surface Protector C

Thixotropic epoxy-ceramic material containing a wearproof coarse corundum aggregate.

Protection of:

- chutes
- cyclone separators
- separators
- elbows and pipes
- screw conveyors
- shredders
- agitators
- pumps for paper pulp hydrotransport
gravel, cinder, ore, coal

Protects against particularly strong abrasion and erosion
No shrinkage or stress of coating when hardening
On metallic and concrete surface
It contains 100% of solids

Minimum application temperature 10°C
Working temperature dry and moist to 150°C/80°C
Colour: brown
Recommended: one layer of 3.5-6.0 mm thick

Surface Protector CK

Thixotropic epoxy-ceramic material containing a wearproof fine corundum aggregate.

Protection of:

- chutes
- cyclone separators
- separators
- elbows and pipes
- screw conveyors
- shredders
- agitators
- pumps for paper pulp hydrotransport
gravel, cinder, ore, coal

Protects against particularly strong abrasion and erosion
No shrinkage or stress of coating when hardening
On metallic and concrete surface
It contains 100% of solids

Minimum application temperature 10°C
Working temperature dry and moist to 150°C/80°C
Colour: brown
Recommended: one layer with thickness of 2,0-5,0 mm

SURFACE PROTECTION AGAINST ABRASION



FILLING

Surface Protector B

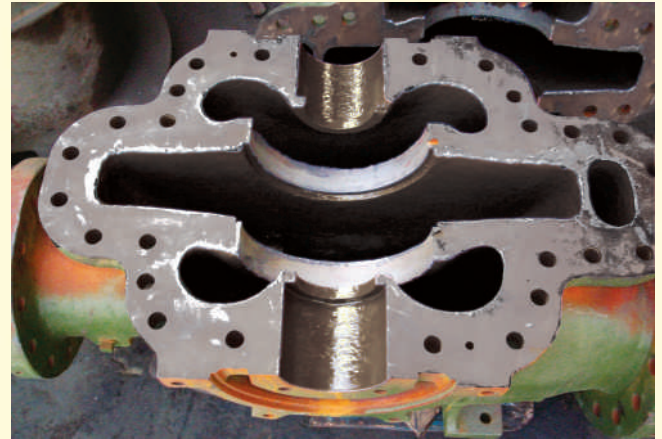
Thixotropic epoxy-ceramic material containing a wearproof corundum fillers in the shape of white balls.

Protection of:

- chutes
- cyclone separators
- separators
- elbows and pipes
- screw conveyors
- shredders
- agitators
- tumblers
- pumps for paper pulp, gravel, cinder, ore, coal hydrotransport

No shrinkage or stress of coating when hardening
Protects against particularly strong abrasion and erosion
It contains 100% of solids

Minimum application temperature 10°C
Working temperature dry and moist to 120°C/80°C
Colour: white
Recommended: one layer of 2,5-6,0 mm thick



PAINTING OR FILLING

Surface Protector CF

Semi-fluid epoxy-ceramic material containing a wearproof corundum fillers. It has a very high resistance to abrasion and compression.

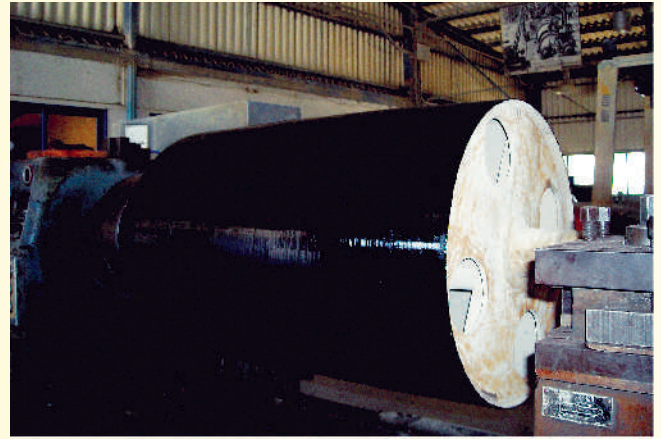
Protection of:

- chutes
- elbows and pipes
- fuel pump base and impellers
- cyclone separators
- fans
- agitators
- shredders
- Kort nozzles and thrusters
- screw conveyors

Protects against corrosion, abrasion, erosion and cavitation
Forms a smooth and tight coating
No shrinkage or stress of coating in hardening
They contain 100% of solids
On metallic and concrete surface

Minimum application temperature 10°C
Working temperature dry and moist to 180°C/80°C
Colour: dun/dark brown
Maximum thickness of layer: 0,4 mm
Recommended: one layer with thickness of 0,8-1,6 mm

SURFACE PROTECTION AGAINST ABRASION



PAINTING OR FILLING

Elastomer 95F, 85F, 75F

Fluid, chemically hardened, binary polyurethane elastomers
They form a flexible coating with outstanding resistance
to shock and aggressive abrasion.

Protection of:

- fuel pump base and impellers
- chutes
- cyclone separators
- screw conveyors
- fans
- pumps for gravel, cinder, coal,
limewater hydrotransport

Good for metallic and concrete surface
They contain 100% of solids

Hardness [ShA]: 75, 85, 95
Minimum application temperature 15°C
Working temperature dry and moist to 120°C/80°C
Colour: black
Maximum thickness of layer: 0,4 mm
Recommended: one layer of 0,8-1,6 mm thick



CHESTER COATINGS MATERIALS

SURFACE PROTECTION AGAINST EROSION AND CORROSION	SURFACE PROTECTION AGAINST CHEMICAL CORROSION	SURFACE PROTECTION AGAINST ABRASION
<p>Metal Ceramic F</p> <ul style="list-style-type: none"> - fluid - resistant to cavitation - Approved for contact with potable water - resistant to chemicals 	<p>Surface Protector E</p> <ul style="list-style-type: none"> - fluid - resistant to aggressive media also at elevated temperatures 	<p>Surface Protector B</p> <ul style="list-style-type: none"> - thixotropic - Resistant to extreme abrasion - Approved for contact with potable water
<p>Metal Ceramic FSL</p> <ul style="list-style-type: none"> - fluid - resistant to cavitation - Approved for contact with potable water - extended time to use - resistant to chemicals 	<p>Surface Protector A</p> <ul style="list-style-type: none"> - resistant to thermal shocks - fluid - contains bituminous fillers 	<p>Surface Protector C</p> <ul style="list-style-type: none"> - Contains coarse corundum aggregate. - thixotropic - Approved for contact with potable water
<p>Metal Ceramic FHT</p> <ul style="list-style-type: none"> - semi-fluid - resistant to cavitation - resistant to high temperatures 	<p>Coating E1</p> <ul style="list-style-type: none"> - to hydrodynamic coating - recommended as base layer 	<p>Surface Protector CK</p> <ul style="list-style-type: none"> - thixotropic - Approved for contact with potable water - contains fine corundum aggregate.
<p>Surface Protector D</p> <ul style="list-style-type: none"> - fluid - approved for contact with potable water 	<p>Coating E2</p> <ul style="list-style-type: none"> - to hydrodynamic coating - recommended as precoat 	<p>Surface Protector CF</p> <ul style="list-style-type: none"> - semi-fluid - Approved for contact with potable water
<p>Surface Protector DSL</p> <ul style="list-style-type: none"> - fluid - extended time to use 	<p>Coating EHT</p> <ul style="list-style-type: none"> - to hydrodynamic coating - resistant to elevated temperatures 	<p>Elastomery 75F, 85F, 95F</p> <ul style="list-style-type: none"> - fluid polyurethane elastomers - resistant to an extreme abrasion and shock
<p>Coating D1</p> <ul style="list-style-type: none"> - to hydrodynamic coating - recommended as base layer 		
<p>Coating D2</p> <ul style="list-style-type: none"> - to hydrodynamic coating - recommended as precoat 		



supreme quality through hard work...

ADVANTAGES OF CHESTER COATING MATERIALS

User friendly

- Perfect texture for easy mixing and application.
- Various colours of Base and Reactor make it easy to evaluate commixture accuracy.
- Supplied in ready-to-use sets.
- This application requires no special tools.

Convenience and safety

- They contain 100% of solids
- They are hardened at room temperature
- Long shelf life/storage period

Reliability

- Extremely good adhesion to various substrates /bases
- No shrinkage or stress of coating when hardening
- Excellent resistance to chemicals, abrasion, cavitation and erosion
- They form a smooth and tight coating



Chester Molecular Sp. z o.o.

ul. Krzywa 20B, 05-092 Łomianki
tel. +48 22 751 28 06
fax +48 22 751 28 07

info@chester.com.pl

www.chestermolecular.com